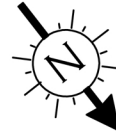
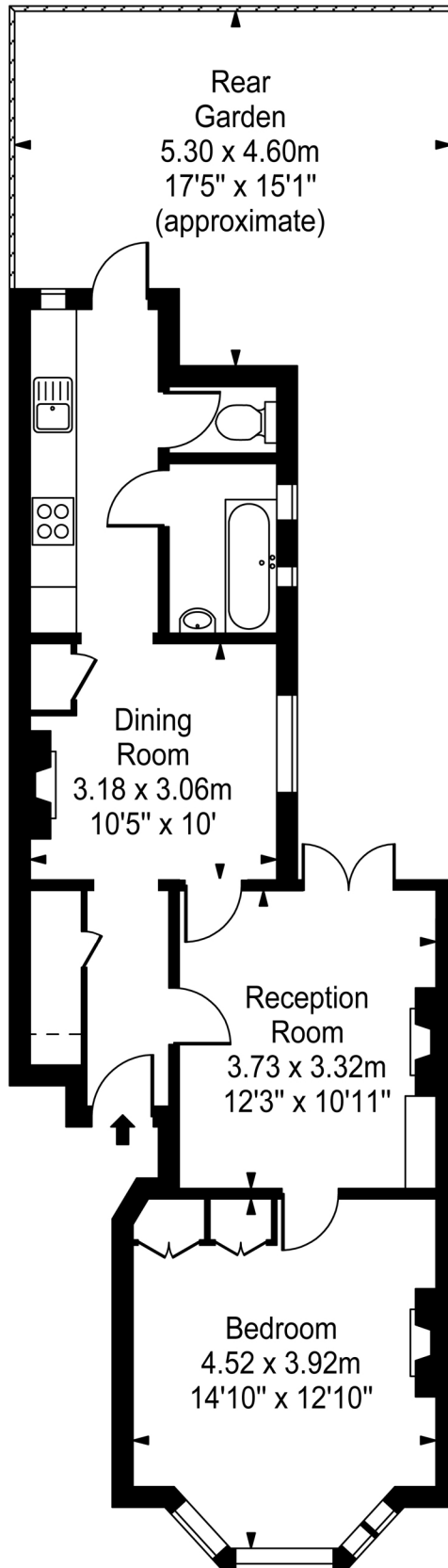


# Salisbury Road

Approx. Gross Internal Area  
57.01 Sq M - 614 Sq Ft



Ground Floor

Every attempt is made to assure accuracy, however measurements are approximate and for illustrative purposes only. Not to scale.  
Floor plan by [www.frameworkphotos.co.uk](http://www.frameworkphotos.co.uk)